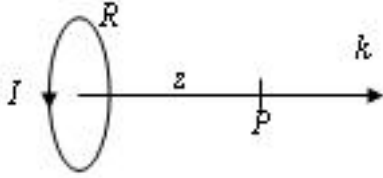


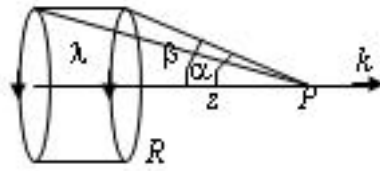
Espira circular en su eje

$$\frac{\mu_0 I R^2}{2(R^2 + z^2)^{3/2}} \mathbf{k}$$



Solenoide en su eje

$$\frac{\mu_0 \lambda}{2} (\cos \alpha - \cos \beta) \mathbf{k}$$



Segmento rectilíneo

$$\frac{\mu_0 I}{4\pi h} \sin \alpha \mathbf{k}$$

